

TURRET SAFETY PATTERN PRESSURE GAUGES



Turret style pressure gauges are used extensively in harsh environments - primarily those found in petrochemical and offshore industries.

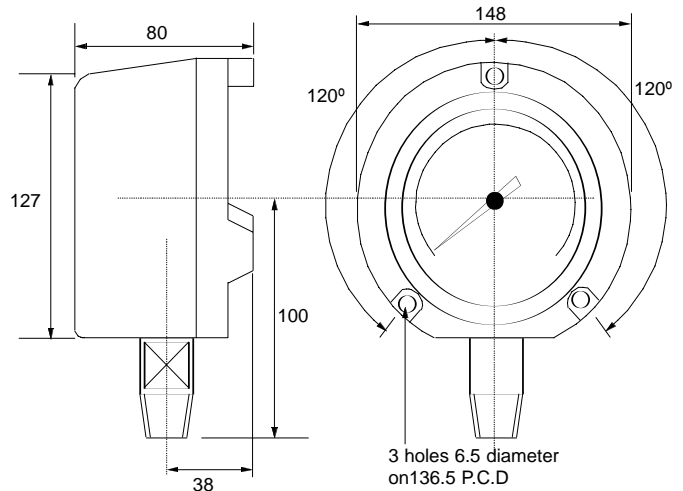
The safegauge blow out back provides even greater operator protection - being retained on the gauge by a centre screw, prevents the risk of injury due to flying debris in the unlikely event of tube failure.

The gauges are supplied as standard dry and sealed for liquid filling, or can be supplied ready filled with glycerine.

SPECIFICATION

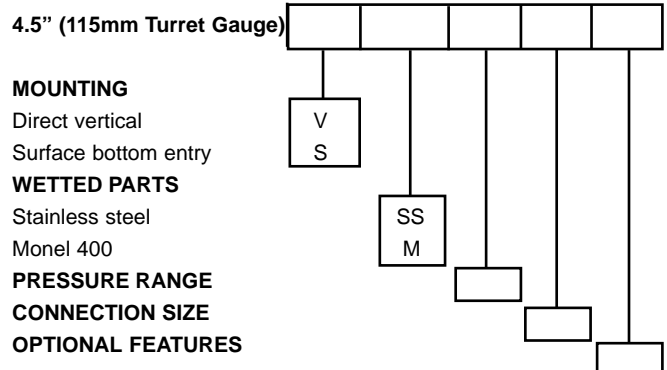
Case	Phenolic case and screw bezel ring
Pressure Element	Bourdon tube in 316 stainless steel or Monel 400 to NACE specification MR-01-75
Pressure Ranges	-1 Bar (30" hg vacuum) to 1000 Bar (15000 psi)
Connection	1/4", 1/2" NPT or 3/8", 1/2" BSP in 316 stainless steel, 1/4", 1/2" NPT in Monel 400 to NACE specification MR-01-75
Window	Safety glass as standard.
Dial	Aluminium alloy, white enamelled with black scale marking
Pointer	Aluminium, black finish, micro adjust for on site adjustment
Movement	Stainless steel
Accuracy	0.5% of scale to ANSI B 40.1
Safety Features	Stainless steel blow-out back sealed for glycerine filling

DIMENSIONS



all measurements in mm

TURRET GAUGE ORDER CODE



Rototherm

instrumentation and control

British Rototherm Co. Ltd.,
Kenfig Industrial Estate, Margam,
Port Talbot, West Glamorgan,
SA13 2PW, United Kingdom
Tel: 01656 740551 Fax: 01656 745915
E-mail: rototherm@rototherm.co.uk
Web site: www.rototherm.co.uk



BS EN
ISO 9001
Registration
no: FM11958