

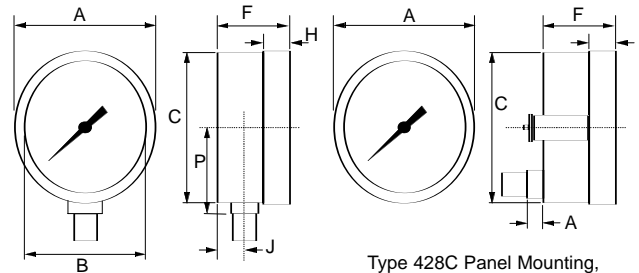
DMC CASED PRESSURE GAUGES



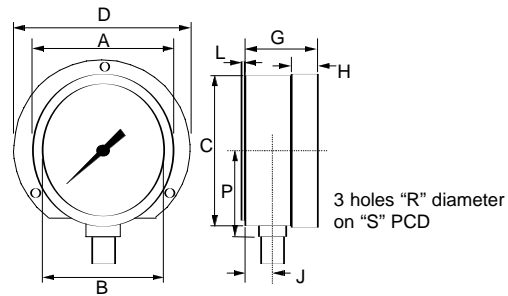
The ideal instrument for petrochemical applications both on and offshore. DMC (dough moulded compound) material has a high resistance to atmospheric and chemical corrosion and high temperatures, being able to withstand 160°C direct heat without any distortion.

DIMENSIONS

Type 421 Direct Mounting, bottom entry



Type 428C Panel Mounting, back entry



Type 424 Surface mounting, bottom entry

all dimensions are in mm

	A	B	C	D	F	G	H	J	K	L	P	R	S
100	111	92	109	127	48	50	23	16	16	3	65	5.4	116
150	170	145	162	188	68	68	25	26	14	6	97	5.5	173

SPECIFICATION

Case & Bezel Black DMC safety pattern case, DMC screw on type bezel. Weatherproof to IP65.

Pressure Element Bourdon tube : phosphor bronze, stainless steel, beryllium copper, Monel 400 to NACE MR-01-75

Pressure Ranges -1 Bar (30" hg vacuum) to 1000 Bar (15000 psi)

Connection 3/8", 1/2" BSP or NPT, brass, stainless steel, Monel 400

Window Plain glass as standard, or safety glass or perspex if required.

Dial Aluminium alloy, white enamelled with black scale marking

Pointer Aluminium

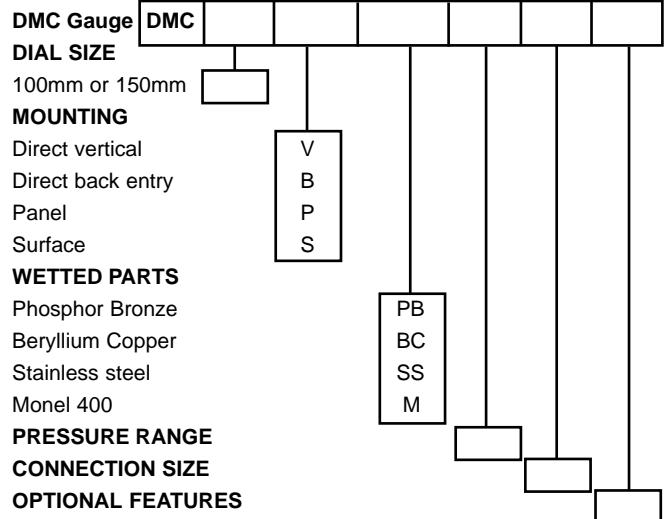
Movement Stainless steel

Accuracy 1% of scale to BS EN837-1

Safety Features Integral baffle and blow-out disc as standard or blow-out back if required. S3 to BS EN837-1.

Weight 100 mm dial = 0.6 Kg
150 mm dial = 1.1 Kg

DMC ORDER CODE



Rototherm

instrumentation and control

British Rototherm Co. Ltd.,
Kenfig Industrial Estate, Margam,
Port Talbot, West Glamorgan,
SA13 2PW, United Kingdom
Tel: 01656 740551 Fax: 01656 745915
E-mail: rototherm@rototherm.co.uk
Web site: www.rototherm.co.uk



BS EN
ISO 9001
Registration
no: FM11958